



Winter baseline photograph



Operation year 15 winter photomontage

Title	8. Year 15 view towards Crickley Hill from North of the Peak	HFoV (°)	90	Visualisation type	4	Camera (lens)	Sony A7rIV, FFS (35mm)
Date, time	15 January 2020, 12:03	Scale/ Enlargement factor	96% at A1	Projection	Cylindrical	Height of camera lens	1.6m
Coordinates	SO 92869 15192 275.092m AOD	Distance from site boundary	155m	View direction	320° from N		
To be viewed at comfortable arms length							

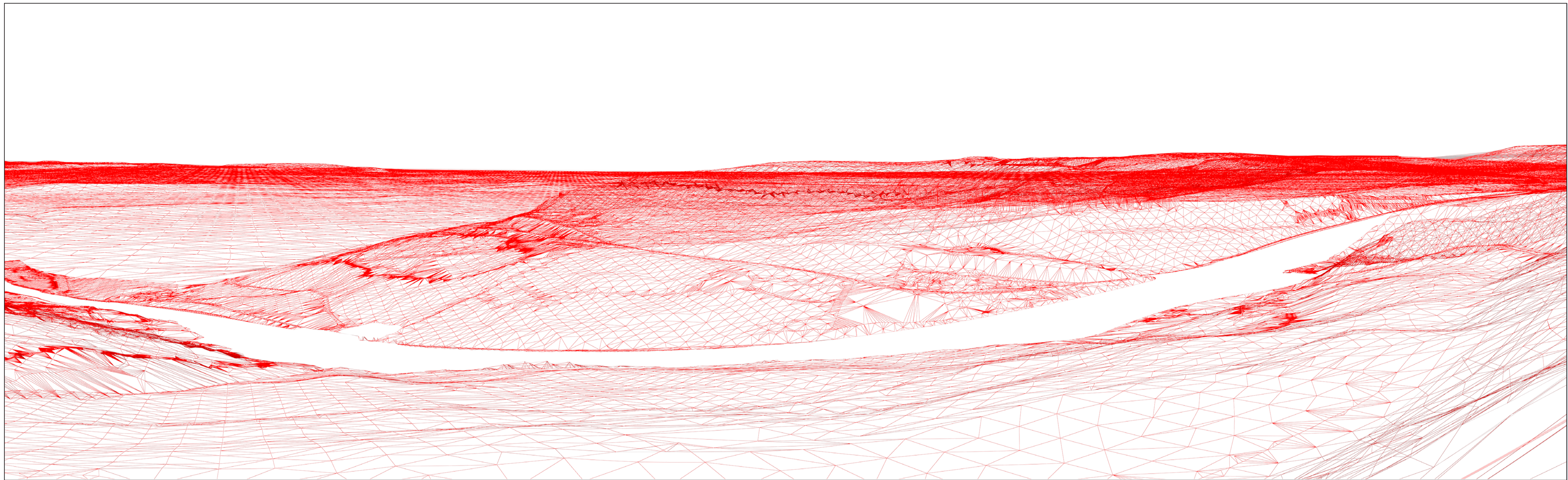


ARUP

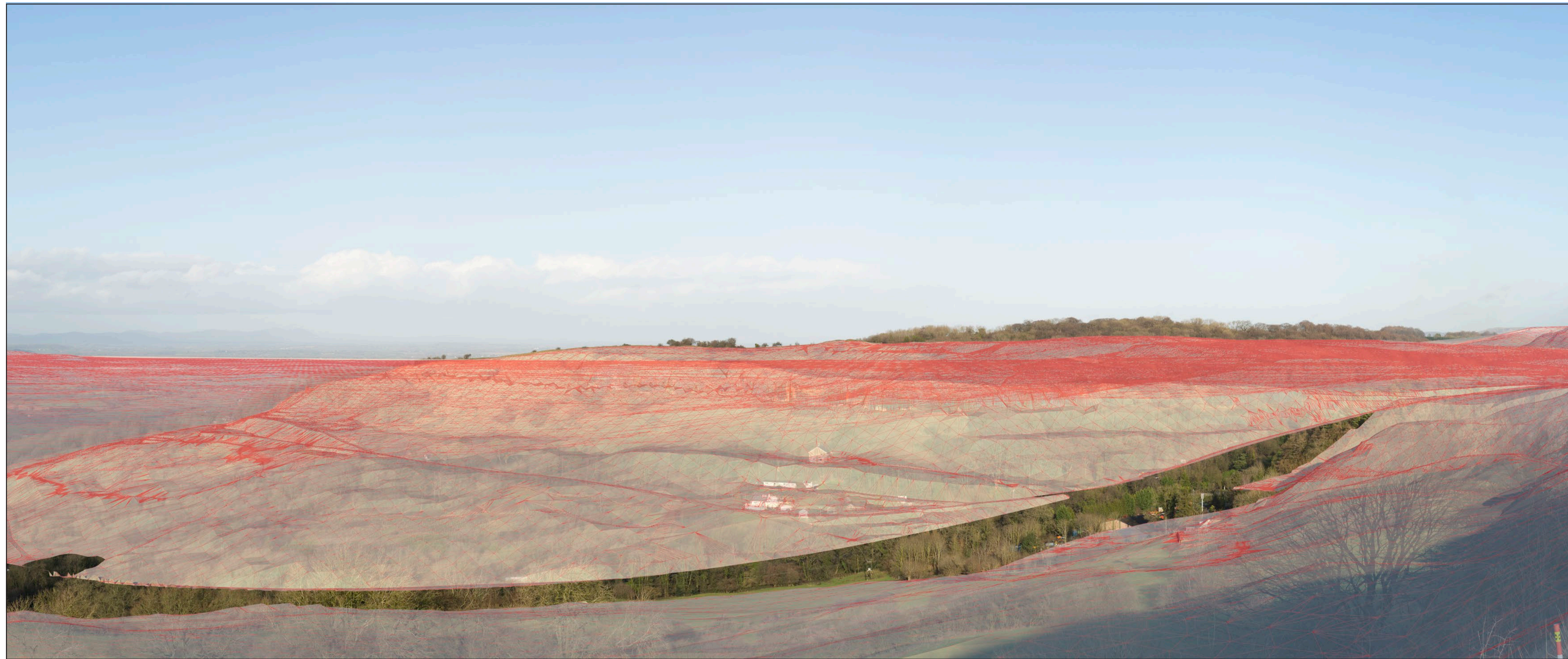
Issue	Date	Comment	By	Chkd	Appd
C01	2021-05-20	DCO Application Submission (May 2021)	HS	AK	JP

A3 - Stage Completed

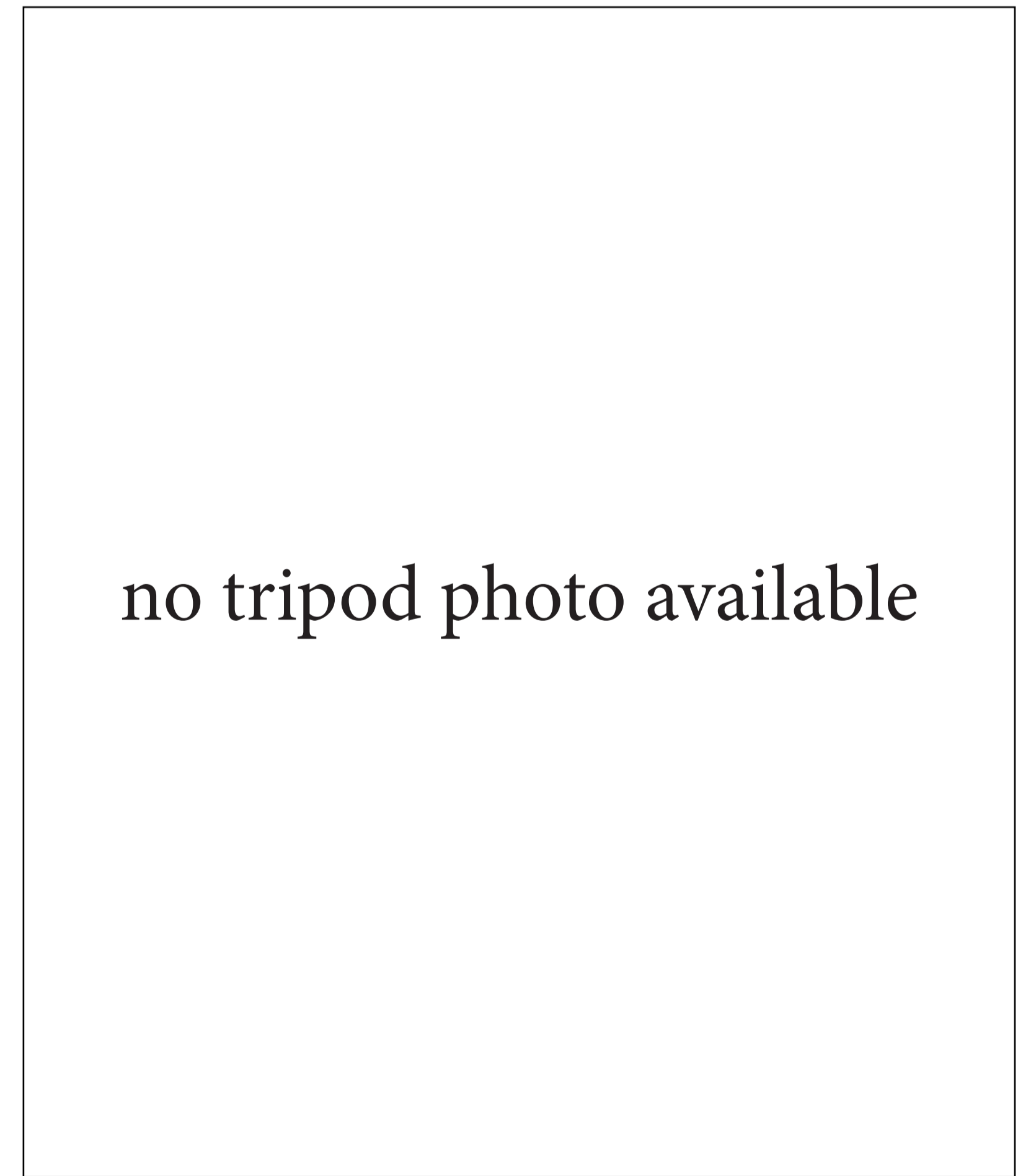
A417 Missing Link Project
Figure 7.10 Photosheets and Visualisations. Sheet 13 of 92
 HE551505-ARP-ELS-X_XX_XXXX_X-VS-LE-000002



Wireline

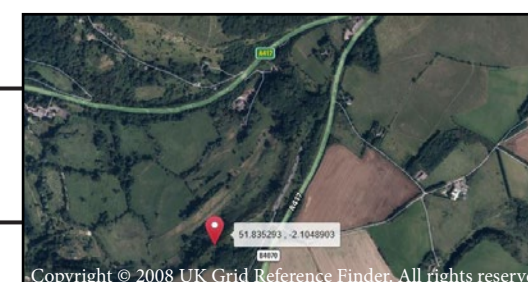


Composite image



Tripod location

Title	8. Working view towards Crickley Hill from North of the Peak	HFoV (°)	90	Visualisation type	4	Camera (lens)	Sony A7rIV, FFS (35mm)
Date, time	15 January 2020, 12:03	Scale/ Enlargement factor	96% at A1	Projection	Cylindrical	Height of camera lens	1.6m
Coordinates	SO 92869 15192 275.092m AOD	Distance from site boundary	155m	View direction	320° from N		
To be viewed at comfortable arms length							



ARUP

Issue	Date	Comment	By	Chkd	Appd
C01	2021-02-20	DCO Application Submission (May 2021)	HS	AK	JP

A3 - Stage Completed



Title:	9. Winter view from Cotswold Way on Barrow Wake	HFoV (°)	90	Visualisation type	1	View direction	North
Date, time:	28 January 2020, 12:55	Scale/ Enlargement factor	96% at A1	Projection	Cylindrical	Camera (lens)	Nikon D610, FFS (Nikon 50mm)



Title:	9. Summer view from Cotswold Way on Barrow Wake	HFoV (°)	90	Visualisation type	1	View direction	North
Date, time:	19 September 2019, 15:15	Scale/ Enlargement factor	96% at A1	Projection	Cylindrical	Camera (lens)	Nikon D610, FFS (Nikon 50mm)



Issue	Date	Comment	By	Chkd	Appd
C01	2021-05-20	DCO Application Submission (May 2021)	HS	AK	JP

A3 - Stage Completed

A417 Missing Link Project
Figure 7.10 Photosheets and Visualisations. Sheet 15 of 92
 HE551505-ARP-ELS-X_XX_XXXX_X-VS-LE-000002



Title:	10a. Winter view of in front of Barrow Wake Promoted Viewpoint	HFoV (°)	90	Visualisation type	1	View direction	North West
Date, time:	7 February 2020, 11:40	Scale/ Enlargement factor	96% at A1	Projection	Cylindrical	Camera (lens)	Sony A7rIV, FFS (35mm)



Title:	10. Summer view of Barrow Wake Promoted Viewpoint	HFoV (°)	90	Visualisation type	1	View direction	North West
Date, time:	19 September 2019, 15:09	Scale/ Enlargement factor	96% at A1	Projection	Cylindrical	Camera (lens)	Nikon D610, FFS (Nikon 50mm)



ARUP

Issue	Date	Comment	By	Chkd	Appd
C01	2021-05-20	DCO Application Submission (May 2021)	HS	AK	JP

A3 - Stage Completed

A417 Missing Link Project
Figure 7.10 Photosheets and Visualisations. Sheet 16 of 92
 HE551505-ARP-ELS-X_XX_XXXX_X-VS-LE-000002



Winter baseline photograph



Operation year 1 winter photomontage

Title	10. Year 1 view of Barrow Wake Promoted Viewpoint	HFoV (°)	90	Visualisation type	4	Camera (lens)	Sony A7rIV, FFS (35mm)
Date, time	7 February 2020, 11:40	Scale/ Enlargement factor	96% at A1	Projection	Cylindrical	Height of camera lens	1.6m
Coordinates	SO 93105 15347 280.307m AOD	Distance from site boundary	1.5m	View direction	330° from N		
To be viewed at comfortable arms length							



ARUP

Issue	Date	Comment	By	Chkd	Appd
C01	2021-05-20	DCO Application Submission (May 2021)	HS	AK	JP

A3 - Stage Completed

A417 Missing Link Project
Figure 7.10 Photosheets and Visualisations. Sheet 17 of 92
 HE551505-ARP-ELS-X_XX_XXXX_X-VS-LE-000002



Winter baseline photograph



Operation year 15 winter photomontage

Title	10. Year 15 view of Barrow Wake Promoted Viewpoint	HFoV (°)	90	Visualisation type	4	Camera (lens)	Sony A7rIV, FFS (35mm)
Date, time	7 February 2020, 11:40	Scale/ Enlargement factor	96% at A1	Projection	Cylindrical	Height of camera lens	1.6m
Coordinates	SO 93105 15347 280.307m AOD	Distance from site boundary	1.5m	View direction	330° from N		
To be viewed at comfortable arms length							

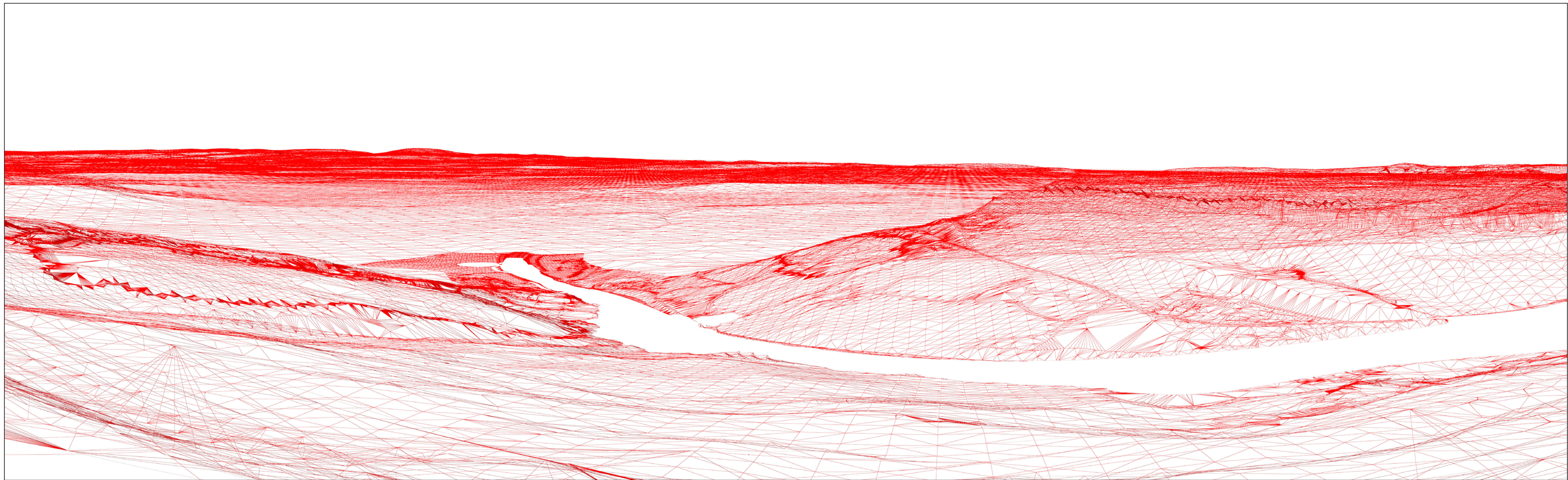


ARUP

Issue	Date	Comment	By	Chkd	Appd
C01	2021-05-20	DCO Application Submission (May 2021)	HS	AK	JP

A3 - Stage Completed

A417 Missing Link Project
Figure 7.10 Photosheets and Visualisations. Sheet 18 of 92
 HE551505-ARP-ELS-X_XX_XXXX_X-VS-LE-000002



Wireline



Projection type Equirectangular
 Camera Sony A7rIV / Panasonic S1 (Night)
 Lens 35mm 1.4
 FOV 180x52deg
 Canvas size 18000x 5200 pixels
 Pixel size 0.01mm
 Linear pixels per degree 100mm
 Virtual film gate 180x52mm
 Virtual Focal length 57.296mm
 Date 07.02.20
 Time 11.40 GMT

no tripod photo available

Tripod location

Composite image

Title	10. Working view of Barrow Wake Promoted Viewpoint	HFoV (°)	90	Visualisation type	4	Camera (lens)	Sony A7rIV, FFS (35mm)
Date, time	7 February 2020, 11:40	Scale/ Enlargement factor	96% at A1	Projection	Cylindrical	Height of camera lens	1.6m
Coordinates	SO 93105 15347 280.307m AOD	Distance from site boundary	1.5m	View direction	330° from N		
To be viewed at comfortable arms length							



ARUP

Issue	Date	Comment	By	Chkd	Appd
C01	2021-02-20	DCO Application Submission (May 2021)	HS	AK	JP

A3 - Stage Completed



Night time representation



Night time data

Title	10. Night view of Barrow Wake Promoted Viewpoint	HFoV (°)	90	Visualisation type	4	Camera (lens)	Sony A7rIV, FFS (35mm)
Date, time	4 February 2020	Scale/ Enlargement factor	96% at A1	Projection	Cylindrical	Height of camera lens	1.6m
Coordinates	SO 93105 15347 280.307m AOD	Distance from site boundary	1.5m	View direction	330° from N		
To be viewed at comfortable arms length							



ARUP

Issue	Date	Comment	By	Chkd	Appd
C01	2021-05-20	DCO Application Submission (May 2021)	HS	AK	JP

A3 - Stage Completed

A417 Missing Link Project
Figure 7.10 Photosheets and Visualisations. Sheet 20 of 92
 HE551505-ARP-ELS-X_XX_XXXX_X-VS-LE-000002



Title:	11. Winter view to Crickley Hill from Barrow Wake end of carpark	HFoV (°)	90	Visualisation type	1	View direction	North West
Date, time:	11 March 2020, 11:06	Scale/ Enlargement factor	96% at A1	Projection	Cylindrical	Camera (lens)	Nikon D610, FFS (Nikon 50mm)



Title:	11. Summer view to Crickley Hill from Barrow Wake end of carpark	HFoV (°)	90	Visualisation type	1	View direction	North West
Date, time:	19 September 2019, 15:46	Scale/ Enlargement factor	96% at A1	Projection	Cylindrical	Camera (lens)	Nikon D610, FFS (Nikon 50mm)



ARUP

Issue	Date	Comment	By	Chkd	Appd
C01	2021-05-20	DCO Application Submission (May 2021)	HS	AK	JP

A3 - Stage Completed



Title:	12. Winter view to A417 from Crickley Hill tractors bridleway	HFoV (°)	90	Visualisation type	1	View direction	North
Date, time:	11 March 2020, 11:20	Scale/ Enlargement factor	96% at A1	Projection	Cylindrical	Camera (lens)	Nikon D610, FFS (Nikon 50mm)



Title:	12. Summer view to A417 from Crickley Hill tractors bridleway	HFoV (°)	90	Visualisation type	1	View direction	North
Date, time:	19 September 2019, 15:29	Scale/ Enlargement factor	96% at A1	Projection	Cylindrical	Camera (lens)	Nikon D610, FFS (Nikon 50mm)



ARUP

Issue	Date	Comment	By	Chkd	Appd
C01	2021-05-20	DCO Application Submission (May 2021)	HS	AK	JP

A3 - Stage Completed

A417 Missing Link Project
Figure 7.10 Photosheets and Visualisations. Sheet 22 of 92
 HE551505-ARP-ELS-X_XX_XXXX_X-VS-LE-000002



Title:	13. Winter view of Cold Slad lane junction with A417	HFoV (°)	90	Visualisation type	1	View direction	East
Date, time:	21 November 2019, 09:33	Scale/ Enlargement factor	96% at A1	Projection	Cylindrical	Camera (lens)	Nikon D610, FFS (Nikon 50mm)



Title:	13. Summer view of Cold Slad lane junction with A417	HFoV (°)	90	Visualisation type	1	View direction	East
Date, time:	9 September 2019, 09:33	Scale/ Enlargement factor	96% at A1	Projection	Cylindrical	Camera (lens)	Nikon D610, FFS (Nikon 50mm)



ARUP

Issue	Date	Comment	By	Chkd	Appd
C01	2021-05-20	DCO Application Submission (May 2021)	HS	AK	JP

A3 - Stage Completed

A417 Missing Link Project
Figure 7.10 Photosheets and Visualisations. Sheet 23 of 92
 HE551505-ARP-ELS-X_XX_XXXX_X-VS-LE-000002